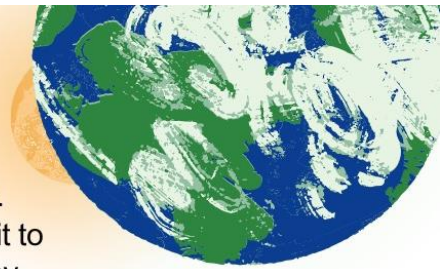


ECLIPSE WORD SEARCH

Name _____ Phone Number _____



For the first time in 200 years, Ohio will experience a Total Eclipse on April 8. Find the eclipse related words below and complete the word search. Return it to the Coshocton County District Library or the West Lafayette Branch Library by April 30th or on your next homebound delivery for a chance to win a prize!



Q C Q R H Q N D V Y A C N M N Z G H P A Q V M S S
 O Z L R E N D S X K M O O U A Q Z W A T C B G Y Y
 L T U L E X J P V L M Z E N V C D Q P X J G Z T X
 I D B Y Q T R Z Y G H I A G T I X A Z U K Y J Y O
 A L N T R B L M R Z T I K K R A R D K V G L C Z F
 U R M X G Y T I L A T O T B Z T C X P Y M H S M D
 E H B W T Y A K F K X L Y R I Y F T X R U W U M P
 B T M M N C G H I W R H S A G X B E L V U Z N H N
 Q C X Z U G O P N U Z L L H Z W C C S X T T S S O
 T C M O H H Z B M X Y O U S A Y Z H J N T W P L I
 A R B M U N E P S E A S O N J D M C E V Q O O D X
 O A J V N C S Z S C O Y W A U U O F D T V C T N H
 Z M F O P O K A Y S U H R A T D H W Y L A C T I E
 G I O G R A Y A P E R R Z T D S A P K A G U B C D
 G L Y A O Y T B N S H L A U Q H J M V G M L A O Q
 I T S H W Q Q Y Q S K S V T I P L F I X D T Y R V
 S Z M V A O R T F A R P U Q I E I S D U V A T O P
 N E L L O A H I I L M O Z F P O D P R F B T E N S
 A F P N L V A M A G N I T U D E N A Q O U I F A O
 T P Q U F Y Y G D Z L T O C R Q T L V Z X O A G Y
 W T N Y E P Z E S P I L C E E I L Q W T L N S J A
 S N T C N M H N S U T D X G O J F Q T J Q C V M H
 A C H R O M O S P H E R E N P L O M D Y I R F W J
 T L T X A V H Z N K K H L J J P G R U X F H G T U
 S W X V D H J G R Z E P B V K Z P U P B Y R R X Y

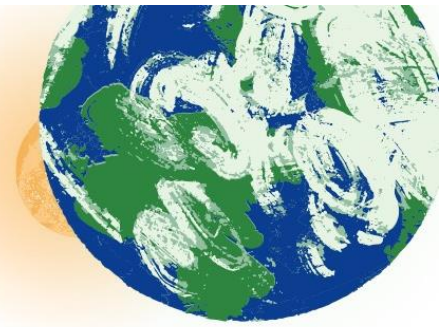


ECLIPSE WORDS

Annular	Glasses	Projector	Totality
Chromosphere	Hybrid	Safety	Umbra
Contact	Magnitude	Saros	
Corona	Obscuration	Season	
Duration	Occultation	Shadow	
Eclipse	Partial	Sunspot	
Filter	Penumbra	Syzygy	

ECLIPSE SCAVENGER HUNT

If you travel to a place in the path of totality, you'll get to see phenomena that only occurs during a Total Solar Eclipse. Use this scavenger hunt to make sure you don't miss anything! Remember to be safe and keep your eclipse glasses on while viewing the eclipse except for the few minutes of totality.



SHADOW BANDS

These are thin wavy lines that can be seen moving on surfaces just before and after the eclipse. They are very difficult to capture on camera and there isn't a consensus on what causes them.



BAILY'S BEADS

Small bright sparkles around the moon occur a few moments before totality. These are caused by the last bits of sun shining through the craters and rough surface of the moon.



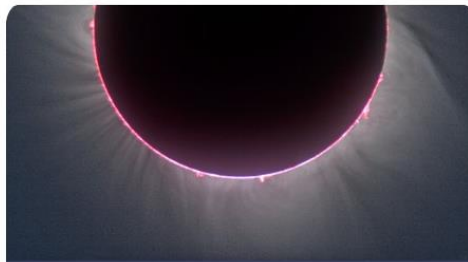
DIAMOND RING

This occurs about 10 seconds before and after totality. It's when the very last bit of sun is shining through on one side of the moon and the corona is observable on the other side.



TOTALITY

This is the moment when the moon completely covers the sun. It can last a little over 3 minutes depending on where you're viewing it. You will be able to remove your eclipse glasses and see the sun's corona around the moon.



BRIGHTENING REAPPEARS

As soon as you see the first instance of light from the other side, put your glasses back on. You will now see the phenomena in reverse order with Diamond Ring, then Baily's Beads and finally Shadow Bands.



Total Solar Eclipse Path through Ohio
April 8, 2024